

2012



ESTONIA · LATVIA · LITHUANIA

*Baltic Films*

**FACTS & FIGURES**

# KEY FIGURES

## ESTONIA

Total population:	1 318 005
Population of capital city Tallinn	403 021
Currency: Euro	EUR
Standard VAT rate	20%
Personal income tax 2012	21%
GDP 2011	15 951 400 000 EUR
GDP per capita 2011	12 102 EUR
Average monthly income 2011	839 EUR
Number of cinemas 2012	45
Number of screens 2012	70
Average ticket price 2012	4,4 EUR
Number of multiplex cinemas 2012	3
Gross Box Office 2012	11 429 139 EUR
Number of admissions 2012	2 586 995
Admissions per capita 2012	1,96
Market share of domestic films 2012	7,60 %
Annual state support for industry 2013	6 135 821 EUR

## LATVIA

Total population	2 029 400
Population of capital city Riga	650 478
Currency LVL (Lats)	1 EUR = 0,7028 LVL
Standard VAT rate	21%
Personal income tax	24%
GDP 2011	20 311 949 000 EUR
GDP per capita 2011	9833 EUR
Average monthly income 2011	660 EUR
Number of cinemas 2012	25
Number of screens 2012	62
Average ticket price 2012	4,27 EUR
Number of multiplex cinemas 2012	4
Gross Box Office 2012	9 755 740 EUR
Number of admissions 2012	2 286 342
Admissions per capita 2012	1,13
Market share of domestic films 2012	4,50 %
Annual state support for industry 2013	1 926 086 EUR

## LITHUANIA

Total population	3 007 758
Population of capital city Vilnius	534 056
Currency LTL (Lits)	1 EUR = 3,4528 LTL
Standard VAT rate	21%
Personal income tax	24%
GDP 2011	30 806 900 000 EUR
GDP per capita 2011	9 496 EUR
Average monthly income 2011	612 EUR
Number of cinemas 2012	42
Number of screens 2012	95
Number of multiplex cinemas 2012	9
Average ticket price 2012	3,87 EUR
Gross Box Office 2012	11 677 666 EUR
Number of admissions 2012	3 020 332
Admissions per capita 2012	1,01
Market share of domestic films 2012	2,54 %
Annual state support for film industry 2013	2 751 391 EUR

# BALTIC FEATURE FILMS

## ESTONIAN FEATURE FILMS RELEASED 2010-2012

Original Title	English Title	Director	Year of Release
Umbkotid*	Douchebags*	Andres Maimik, Rain Tolk	2012
Rat King	Rat King (FI/EE)	Petri Kotwica	2012
Vasaku jala reede	Bad Hair Friday	Arun Tamm, Andres Köpper	2012
Hella W	Hella W (FI/EE)	Juha Wuolijoki	2012
Üksik saar	Lonely Island (EE/LV/BY)	Peeter Simm	2012
Puhastus/ Puhdistus	Purge (FI/EE)	Antti Jokinen	2012
Seenelkäik	Mushrooming	Toomas Hussar	2012
Eestlanna Pariisis / Une estonienne a Paris	A Lady in Paris (FR/EE/BE)	Ilmar Raag	2012
Kõik muusikud on kaabakad	All Musicians are Bastards	Heleri Saarik	2012
Deemonid	Demons	Ain Mäeots	2012
Picas	Pizzas (LV/EE)	Laila Pakalniņa	2012
Täitsa lõpp!	That's IT!	collective work	2011
Üks mu sõber	A Friend of Mine	Mart Kivastik	2011
Kirjad Ingliile	Letters to Angel (EE/FI)	Sulev Keedus	2011
Surnuaiavahi tütar	Graveyard Keeper's Daughter	Katrin Laur	2011
Rotilõks	Rat-trap (EE/RU)	Andres Puustusmaa	2011
Kormoranid ehk Nahkpükse ei pesta	Farts of Fury	Andres Maimik, Rain Tolk	2011
Lotte ja kuukivi saladus	Lotte and Moonstone Secret (EE/LV)	Janno Pöldma, Heiki Ernits	2011
Idioot	The Idiot	Rainer Sarnet	2011
Polli päevikud	Poll Diaries (EE/DE/AT)	Chris Kraus	2010
Punane elavhõbe	Red Mercury (EE/RU)	Andres Puustusmaa	2010
Phobos	Phobos (EE/RU)	Oleg Assadulin	2010
Lumekuninganna	The Snow Queen (EE/NO)	Marko Raat	2010

\* TV film

## LATVIAN FEATURE FILMS RELEASED 2010-2012

Original Title	English Title	Director	Year of Release
Sapņu komanda	Dream Team 1935	Aigars Grauba	2012
Golfa straume zem leduskalna	Gulf Stream Under The Iceberg (LV/RU)	Yevgeny Pashkevich	2012
Üksik saar	Lonely Island (EE/LV/BY)	Peeter Simm	2012
Mona	Mona (LV/IS)	Ināra Kolmane	2012
Cilvēki tur	People Out There	Aik Karapetian	2012
Picas	Pizzas (LV/EE)	Laila Pakalniņa	2012
Dancis pa trim	Threesome Dance	Arvids Krievs	2011
Es mīlu tevi, Rīga	I Love You Riga	Pavels Gumennikovs	2011
Kolka Cool	Kolka Cool	Juris Poškus	2011
Lote un Mēness akmens noslēpums	Lotte and Moonstone Secret (EE/LV)	Janno Pöldma, Heiki Ernits	2011
Monsieur Tauriņš	Monsieur Taurins	Aleksandrs Hāns	2011
Amaya	Hong Kong Confidential (LV/HK)	Māris Martinsons	2010
Rūdolfā mantojums	Rudolf's Gold	Jānis Streičs	2010
Seržanta Lapiņa atgriešanās	Return of Sergeant Lapins	Gatis Šmits	2010

## LITHUANIAN FEATURE FILMS RELEASED 2010-2012

Original Title	English Title	Director	Year of Release
Aurora	Vanishing Waves	Kristina Buožytė	2012
Narcizas	Narcissus	Dovilė Gasiūnaitė	2012
Miegančių drugelių tvirtovė	Fortress of Sleeping Butterflies	Algimantas Puipa	2012
Moters saulė	The Woman Sun	Ruslan Korostenskij	2012
Tadas Blinda. Pradžia	Tadas Blinda	Donatas Ulvydas	2011
Myliu kulką Tavo širdyje	I Love Bullet in Your Heart	Donatas Vaišnoras	2011
Zero 2: muilo opera	Zero 2	Emilis Vėlyvis	2010
Kai apkabinsiu Tave	Back To Your Arms	Kristijonas Vildžiūnas	2010
Atsisveikinimas (Laimingo žmogaus istorija)	Farewell	Tomas Donela	2010
Anarchija Žirmūnuose	Anarchy in Žirmunai	Saulius Drunga	2010
Kelionė per Lietuvą	Journey Through Lithuania	Vaidotas Digimas	2010

## ANNUAL STATE SUPPORT FOR FILM INDUSTRY 2009-2013

	Ministry of Culture	Cultural Endowment	Estonian Film Institute	Total
	EUR	EUR	EUR	EUR
2009	465 916	1 368 540	3 715 930	5 550 386
2010	877 060*	1 414 290	3 434 383	5 725 732*
2011	522 989	1 407 619	3 535 350	5 465 958
2012	1 063 288	1 645 415	3 434 384	6 143 087**
2013	571 000	1 739 883	3 824 938	6 135 821

\* incl. support for European Film Academy Award 2010 ceremony in Tallinn / \*\*incl. support for Estonian Film 100 celebrations

## DOMESTIC FILMS RELEASED 2008-2012

	Feature films	Shorts	Animation	Documentaries	Total
2008	5	8	7	38	58
2009	6	2	5	30	43
2010	4	6	1	34	45
2011	7	5	6	35	53
2012	11	4	8	34	57

## NUMBER OF CINEMAS 2008-2012

	Total No. of screening places	No. of permanently working cinemas	No. of multiplex cinemas	No. of screens	No. of digital screens
2008	49	10	2	67	2
2009	49	12	3	74	4
2010	49	12	3	74	13
2011	49	12	3	74	15
2012	45	10	3	70	18

## ADMISSIONS 2008-2012

	Domestic films	Foreign films	Total	Per capita
2008	119 570	1 511 392	1 630 962	1,22
2009	36 567	1 747 213	1 783 780	1,33
2010	43 317	2 088 124	2 131 441	1,59
2011	171 335	2 255 535	2 426 870	1,80
2012	195 844	2 391 151	2 586 995	1,96

## GROSS BOX OFFICE 2008-2012

	EUR
2008	7 283 029
2009	7 527 139
2010	7 799 015
2011	10 051 315
2012	11 429 139

## CINEMA PREMIERES 2008-2012

	Domestic	Foreign	Total
2008	17 <sup>3</sup>	149	166 <sup>3</sup>
2009	9 <sup>2</sup>	153	162 <sup>2</sup>
2010	12 <sup>1</sup>	163	175 <sup>1</sup>
2011	23 <sup>5</sup>	194	217
2012	24 <sup>6</sup>	204	228

<sup>1</sup> incl. 8 documentary films

<sup>2</sup> incl. 3 documentary films

<sup>3</sup> incl. 5 features, 1 animation, 9 documentaries, 4 shorts

<sup>4</sup> incl. 3 documentary films

<sup>5</sup> incl. 15 documentary films

<sup>6</sup> incl. 13 documentary films

## BREAKDOWN OF FILMS BY ORIGIN 2012 (premieres)

	No. of films	Admissions	GBO EUR
Domestic	24 <sup>6</sup>	194579	758 199
European	86	445 435	2 010 487
USA	109	1 727 017	7 791 274
Other	9	44 334	1 77 648
Total	228	2 411 365	10 737 608

## AVERAGE TICKET PRICE 2008-2012

	EUR
2008	4,5
2009	4,2
2010	3,7
2011	4,1
2012	4,4



## TOP TEN 2012

Title	Country of Origin	Admissions	GBO EUR	
Ice Age 4: Continental Drift	USA	170 696	699 033	3D
Skyfall	UK/USA	94 995	449 181	
Madagascar 3: Europe's Most Wanted	USA	87 764	355 201	3D
Seenelkäik / Mushrooming	ESTONIA	73 712	318 286	
Brave	USA	70 488	282 778	3D
Ted	USA	59 832	262 695	
The Twilight Saga: Breaking Dawn 2	USA / UK	51 838	229 841	
The Dictator	USA	49 513	215 346	
The Hobbit: An Unexpected Journey	USA	49 509	273 361	3D
The Dark Knight Rises	USA / CAN	45 031	195 226	

## ANNUAL STATE SUPPORT FOR FILM INDUSTRY 2009-2013

	National Film Centre of Latvia		Culture Capital Foundation		Total	
	LVL	EUR	LVL	EUR	LVL	EUR
2009	1 770 464	2 519 158	461 680	656 915	2 232 144	3 176 073
2010	1 065 010	1 515 381	260 335	370 425	1 325 345	1 885 807
2011	1 160 461	1 651 197	241 828	344 092	1 402 289	1 995 289
2012	1 064 266	1 514 323	379 832	540 455	1 444 098	2 054 778
2013	1 092 766	1 554 875	260 887	371 211	1 353 653	1 926 086

## DOMESTIC FILMS RELEASED 2008-2012

	Feature films	Shorts	Animation	Documentaries	Total
2008	4	4	7	12	27
2009	4	6	11	21	42
2010	3	3	10	19	35
2011	5*	2	4	17	28
2012	6	2	8	8	24

\* incl. 1 feature-length animation

## NUMBER OF CINEMAS 2008-2012

	Total No. of screening places	No. of permanently working cinemas	No. of multiplex cinemas	No. of screens	No. of digital screens
2008	28	15	2	50	3
2009	28	17	3	55	4
2010	26	17	4	63	11
2011	26	17	4	63	15
2012	25	17	4	62	28

## ADMISSIONS 2008-2012

	Domestic films	Foreign films	Total	Per capita
2008	115 400	2 239 269	2 354 669	1,03
2009	83 230	1 860 769	1 943 999	0,86
2010	146 379	1 959 848	2 106 227	0,94
2011	92 386	1 968 763	2 061 149	0,99
2012	103 040	2 183 302	2 286 342	1,13

## GROSS BOX OFFICE 2008-2012

	LVL	EUR
2008	6 967 123	9 913 379
2009	5 875 802	8 360 561
2010	5 951 708	8 468 566
2011	5 895 627	8 388 770
2012	6 856 334	9 755 740

## CINEMA PREMIERES 2008-2012

	Domestic	European	USA	Other	Total
2008	4	27	111	10	152
2009	18 <sup>2</sup>	158 <sup>4</sup>	105	21	302 <sup>4</sup>
2010	19 <sup>1</sup>	134	104	44	301 <sup>3</sup>
2011	16 <sup>6</sup>	116	117	42	291 <sup>5</sup>
2012	16 <sup>7</sup>	66	106	4	192

<sup>1</sup> incl. 3 features, 12 documentaries, 3 animation programmes, 1 short's programme

<sup>2</sup> incl. 4 features, 9 documentaries, 2 animation programmes, 3 short's programmes

<sup>3</sup> incl. 137 films screened at film festivals

<sup>4</sup> incl. 132 films screened at film festivals

<sup>5</sup> incl. 129 films screened at film festivals

<sup>6</sup> incl. 11 documentaries

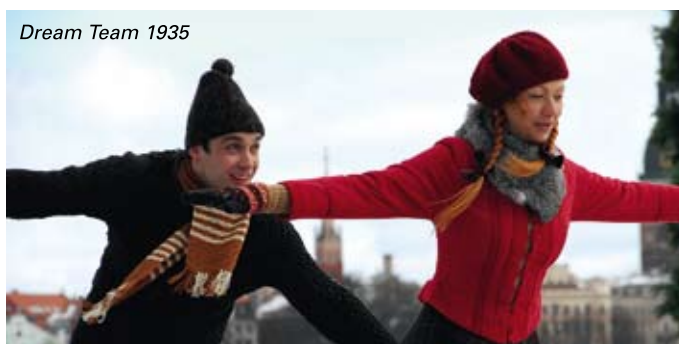
<sup>7</sup> incl. 8 documentaries, 1 animation and 1 short's programmes

## BREAKDOWN OF FILMS BY ORIGIN 2012 (premieres)

	No. of films	Admissions	GBO LVL	GBO EUR
Domestic	16 <sup>7</sup>	97 304	193 273	275 004
European	66	374 526	1 188 879	1 691 632
USA	106	1 617 942	4 987 464	7 096 563
Other	4	5 317	17 055	24 267
Total	192	2 095 089	6 386 671	9 087 467

## AVERAGE TICKET PRICE 2008-2012

	LVL	EUR
2008	3,30	4,69
2009	3,50	4,98
2010	2,80	4,02
2011	2,86	4,07
2012	3,00	4,27



## TOP TEN 2012

Title	Country of Origin	Admissions	GBO LVL	GBO EUR	
Ice Age 4: Continental Drift	USA	148 232	434 358	618 039	3D
Madagascar 3: Europe's Most Wanted	USA	105 988	303 464	431 793	3D
Skyfall	UK/USA	84 114	276 319	393 169	
Brave	USA	59 651	162 496	231 212	3D
The Twilight Saga: Breaking Dawn 2	USA UK	56 473	172 488	245 429	
Hotel Transylvania	USA	46 401	148 109	210 741	3D
Girl with the Dragon Tattoo	USA/SE/NO	46 239	142 117	202 215	
Sappu komanda 1935 / Dream Team 1935	LATVIA	46 095	124 089	176 564	
Puss In Boots	USA	45 607	129 712	184 565	3D
The Lorax		43 423	116 776	166 158	3D

# LITHUANIA

## ANNUAL STATE SUPPORT FOR FILM INDUSTRY 2009-2013

	Ministry of Culture		Cultural Foundation		Lithuanian Film Centre		Total	
	LTL	EUR	LTL	EUR	LTL	EUR	LTL	EUR
2009	6 863 000	2 182 000	631 951	1 987 662	0	0	6 682 000	1 935 241
2010	4 500 000	1 303 290	2 778 500	805 362	0	0	7 278 500	2 108 652
2011	4 801 449	1 390 595	2 439 900	706 700	0	0	7 241 349	2 097 240
2012	4 570 352	1 323 666	2 159 000	625 289	0	0	6 729 352	1 948 956
2013	0	0	0	0	9 500 000	2 751 391	9 500 000	2 751 391

## DOMESTIC FILMS RELEASED 2008-2012

	Feature films	Shorts	Animation	Documentaries	Total
2008	6	7	14	16	43
2009	6	9	6	10	31
2010	4	13	4	11	32
2011	2	19	8	9	38
2012	4	1	10	18	33

## NUMBER OF CINEMAS 2008-2012

	Total No. of screening places	No. of permanently working cinemas	No. of multiplex cinemas	No. of screens	No. of digital screens
2008	46	44	7	81	0
2009	44	41	8	88	4
2010	45	42	9	95	9
2011	45	42	9	95	18
2012	42	42	9	95	21

## ADMISSIONS 2008-2012

	Total	Per capita	Average population
2008	3 270 984	0,98	3 350 100
2009	2 699 552	0,81	3 349 872
2010	2 621 995	0,74	3 318 981
2011	2 968 028	0,93	3 201 344
2012	3 020 332	1,01	3 007 758

## GROSS BOX OFFICE 2008-2012

	LTL	EUR
2008	39 871 260	11 547 515
2009	36 638 229	10 611 144
2010	33 977 613	9 840 597
2011	37 075 866	10 737 913
2012	40 320 644	11 677 666

## CINEMA PREMIERES 2008-2012

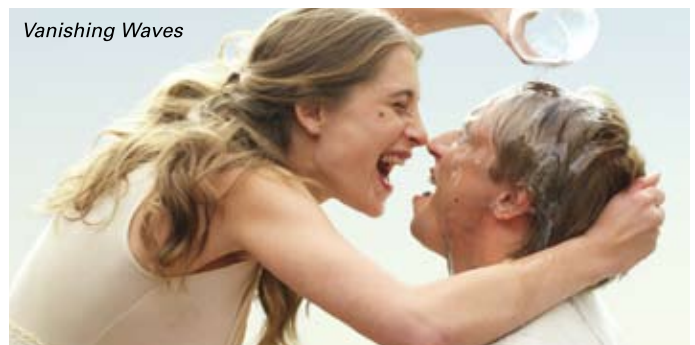
	Domestic	European	USA	Other	Total
2008	6	50	97	7	163
2009	10	41	102	2	155
2010	11	58	96	2	167
2011	11	63	109	3	186
2012	10	82	89	9	190

## BREAKDOWN OF FILMS BY ORIGIN 2012 (premieres)

	No. of films	Admissions	GBO LTL	GBO EUR
Domestic	10	75 827	912 078	264 156
European	82	553 719	7 345 016	2 127 264
USA	89	2 121 490	28 749 943	8 326 559
Other Countries	9	38 762	497 694	144 142
	190	2 789 798	37 504 731	10 862 121

## AVERAGE TICKET PRICE 2008-2012

	LTL	EUR
2008	12,19	3,53
2009	13,57	3,93
2010	12,96	3,75
2011	12,54	3,62
2012	13,36	3,87



## TOP TEN 2012

Title	Country of Origin	Admissions	GBO LTL	GBO EUR	
Ice Age 4: Continental Drift	USA	227 312	3 040 463	880 579	3D
Madagascar 3: Europe's Most Wanted	USA	147 086	1 854 002	536 956	3D
Puss In Boots	USA	91 132	1 241 050	359 433	3D
Hotel Transylvania	USA	84 383	1 128 758	326 911	3D
The Twilight Saga: Breaking Dawn 2	USA	92 881	1 203 498	348 557	
Skyfall	USA	72 174	992 248	287 375	
The Hobbit: An Unexpected Journey	USA	56 899	952 676	275 914	3D
Brave	USA	71 791	893 374	258 739	3D
The Dictator	USA	63 586	837 905	242 674	
The Lorax	USA	67 059	831 721	240 883	3D



## Main Film Institutions

**Estonian Ministry of Culture**  
Tel +372 628 2222  
min@kul.ee  
www.kul.ee

**Estonian Film Institute**  
Tel +372 627 6060  
film@efsa.ee  
www.efsa.ee

**MEDIA Desk Estonia**  
c/o Estonian Film Institute  
Tel +372 627 6065  
info@mediadeskestonia.eu  
www.mediadeskestonia.eu

**Estonian Cultural Endowment**  
Tel +372 699 9150  
kulka@kulka.ee  
www.kulka.ee

**Estonian National Archive's**  
filmihariv@ra.ee

**Estonian Film Commission**  
**Film Commissioner Martin**  
**Aadamsoo**  
Tel +372 5650 8383  
www.filmestonia.ee  
www.filmestonia.eu

**Estonian Filmmakers Union**  
Tel +372 646 4164  
kinoliit@kinoliit.ee  
www.kinoliit.ee

**Estonian Film Producers Association**  
produtsendid@produtsendid.ee  
www.produtsendid.ee

**Estonian National Film Producers Union**  
Tel +372 677 6360  
kalev@joonisfilm.ee

**The Estonian Association of Film Journalists**  
Tel +372 511 2400  
margit.tonson@ekspress.ee

## Main Distributors

**Acme Film**  
Tel +372 5302 3005  
katre.valgma@acme.ee  
www.acmefilm.ee

**BestFilm**  
Tel +372 5567 0030  
kino@bestfilm.eu  
www.BestFilm.eu

**Forum Cinemas**  
Tel +372 680 0706  
info@forumcinemas.ee  
www.forumcinemas.ee

**EstinFilm**  
Tel +372 5558 3279  
info@estinfilm.ee  
www.estinfilm.ee  
**Kinobuss**

Tel +372 672 9704  
info@kinobuss.ee  
www.kinobuss.ee

**MTÜ Must Käsi**  
Tel +372 646 6332  
tiina@kinosoprus.ee  
www.kinosoprus.ee

**MTÜ Otaku**  
Tel +372 663 4239  
animefest@hot.ee

**Tallinnfilm**  
Tel +372 663 1370  
tallinnfilm@efsa.ee  
www.tallinnfilm.ee

## International film festivals

**Animation Film Festival**  
**Animated Dreams**  
Tel +372 631 4640  
anima@poff.ee  
www.poff.ee/anima

**Baltic Event**  
Tel +372 677 6363  
balticevent@poff.ee  
be.poff.ee

**Children and Youth Film Festival Just Film**  
Tel +372 631 4640  
justfilm@poff.ee  
www.poff.ee/justfilm

**Docpoint Tallinn**  
info@docpoint.ee  
www.docpoint.ee

**Haapsalu Horror and Fantasy Film festival**  
Tel +372 631 4640  
hoff@poff.ee  
www.hoff.ee

**Tallinn Black Nights Film Festival**  
Tel +372 631 4640  
poff@poff.ee  
www.poff.ee

**Matsalu International Nature Film Festival**  
Tel +372 551 0910  
tiit.mesila@matsalufilm.ee  
www.matsalufilm.ee

**Pärnu International Documentary and Anthropology Film Festival**  
Tel +372 443 0772  
docfest@chaplin.ee  
www.chaplin.ee

**Worldfilm. Tartu Festival of Visual Culture**  
Tel +372 742 2266  
festival@worldfilm.ee  
www.worldfilm.ee

## Main Film Institutions

**Ministry of Culture**  
Tel +371 6707 8137  
pasts@km.gov.lv  
www.km.gov.lv

**National Film Centre of Latvia (NFC)**  
Tel +371 6735 8878  
nfc@nfc.gov.lv  
www.nfc.lv

**Media Desk Latvia**  
c/o National Film Centre of Latvia  
Tel +371 6735 8857  
mediadesk@nfc.gov.lv  
www.mediadesklatvia.eu

**Riga City Council co-financing programme**  
Riga Film Fund  
Tel +371 6735 7659  
dace.lesinska@riga.lv  
www.filmriga.lv

**Culture Capital Foundation**  
Tel +371 6735 3177  
kkf@kkf.lv  
www.kkf.lv

**Riga Film Museum**  
Tel +371 6735 8873  
kinomuzejs@kinomuzejs.lv  
www.kinomuzejs.lv

**Latvian Film Producers Association**  
info@filmlatvia.lv  
www.filmlatvia.lv

**Latvian Filmmakers Union**  
Tel +371 6728 8536  
lks@delfi.lv

**Latvia State Archive of Audiovisual Documents**  
Tel +371 6752 9822  
fonds@delfi.lv  
www.arhivi.lv

## Main Distributors

**Forum Cinemas**  
Tel +371 6735 7608  
forumcinemas@forumcinemas.lv  
www.forumcinemas.lv

**Acme Film**  
Tel +371 6733 8027  
inese@acme.lv  
www.acmefilm.lv

**Topfilm Baltic**  
Tel +371 2600 3760  
natalja@topfilm.lv  
www.topfilm.lv

## International Film Festivals

**2ANNAS, International Short Film Festival**  
October 21 – 27, 2013  
Tel +371 2976 5381  
viesturs@2annas.lv  
www.2annas.lv

**And the Word Became Film..., International Film Forum**  
April 5 – 12, 2013  
Tel +371 2918 7510  
stunda@stunda.lv  
www.stunda.lv

**Baltic Pearl, International Film Festival**  
September 16 – 21, 2013  
Tel +371 6728 9019  
info@balticpearl.lv  
www.balticpearl.lv

**Baltic Sea Forum for Documentaries**  
September 4 – 8, 2013  
Tel +371 6735 8857  
balticforum@nfc.gov.lv  
www.mediadesklatvia.eu

## Main Film Institutions

**Lithuanian Film Centre**  
Tel +370 5213 0547  
info@lkc.lt  
www.lkc.lt

**Ministry of Culture of the Republic of Lithuania**  
Tel +370 5219 3443  
v.andriukaiyte@lrkm.lt  
www.lrkm.lt

**MEDIA Desk Lithuania**  
Tel +370 680 35042  
info@mediadesklithuania.eu  
www.mediadesklithuania.eu

**Vilnius Film Office**  
Tel +370 6140 4696  
film@vilnius.lt  
www.filmvilnius.com

**Lithuanian Filmmakers Union**  
Tel +370 5212 0759  
lks@kinosajunga.lt  
www.kinosajunga.lt

**Independent Producers Association of Lithuania**  
Tel +370 6829 6128  
info@filmproducers.lt  
www.filmproducers.lt

**Association „Autorinio kino aljansas“**  
Tel +370 6992 6552  
AutorinisKinas@hotmail.com

**Association of Film industry**  
Tel +370 687 45 758  
zilvinas.naujokas@acmefilm.lt

**Association of Cinema Exhibitors**  
Tel +370 6550 0498  
kinorodytojai@gmail.com

**Lithuanian Association of Cinematographers**  
Tel +370 6999 0146  
lac@lac.lt  
www.lac.lt

**Lithuanian Central State Archives**  
Tel +370 5247 7811  
lcva@archyvai.lt  
www.archyvai.lt

## Main Distributors

**Acme**  
Tel +370 3733 3433  
info@acme.lt  
www.acmefilm.com

**Garsų pasaulio įrašai**  
Tel +370 5261 3847  
gpi@gpi.lt  
www.gpi.lt

**Forum Cinemas**  
Tel +370 5264 4760  
info@forumcinemas.lt  
www.forumcinemas.lt

**Lietuvos kinas**  
Tel +370 5277 2896  
lietuvoskinas@takas.lt

**Planetos filmai**  
Tel +370 5261 0505  
vilma@skalvija.lt  
www.skalvija.lt

**Kino pasaka**  
Tel +370 5261 1516  
pasaka@kinopasaka.lt  
www.kinopasaka.lt

**MEED Films**  
Tel +370 6019 4931  
info@meedfilms.com  
www.meedfilms.com

**Kino Aljansas**  
Tel +370 5262 0367  
info@kino.lt  
www.scanorama.lt

## International Film Festivals

**European Film Forum Scanorama**  
Tel +370 6164 5643  
info@kino.lt  
www.scanorama.lt

**Vilnius International Film Festival Kino Pavasaris**  
Tel +370 5249 7221  
info@kinopavasaris.lt  
www.kinopavasaris.lt

**Kaunas International Film Festival**  
Tel +370 6550 6559  
info@kinofestivalis.lt  
www.kinofestivalis.lt

**International Vilnius Documentary Film Festival**  
Tel +370 5261 0505  
vilma@skalvija.lt  
www.vdff.lt

**Human Rights Film Festival Ad Hoc: Inconvenient Films**  
Tel +370 6051 2624  
gediminas@chr.lt  
www.nepatoguskinas.lt

**International Short Film Festival Vilnius Film Shorts**  
Tel +370 6731 6548  
info@filmshorts.lt  
www.filmshorts.lt

**The International Women Film Festival Cherchez la femme**  
Tel +370 5261 1516  
justus.barnes@kinopasaka.lt  
www.serselifam.com

**International Animation Film Festival Tindirindis**  
Tel +370 6104 7151  
tindirindis\_festival@yahoo.com  
www.tindirindis.lt

**International Film Festival Baltijos Banga**  
Tel +370 6439 4714  
info@baltijosbanga.lt  
www.baltijosbanga.lt

*Hedgehogs and the City*



## Co-operation Platform

ESTONIA · LATVIA · LITHUANIA



**B**altic Films is an umbrella organisation promoting internationally films from Estonia, Latvia and Lithuania. Baltic Films represents the three countries at major film festivals and markets. The founding members of Baltic Films are the Estonian Ministry of Culture, the Ministry of Culture of the Republic of Latvia and the Ministry of Culture of the Republic of Lithuania.

## National Representatives

### Marge Liiske

Managing Director of Estonian Film Institute  
Tel +372 6276 060  
marge@efsa.ee  
www.efsa.ee

### Ilze Gailite Holmberg

Director of National Film Centre of Latvia  
Tel +371 6735 8870  
ilze.gailite@nfc.gov.lv  
www.nfc.lv

### Rolandas Kvietkauskas

Director of Lithuanian Film Centre  
Tel +370 5213 0734  
r.kvietkauskas@lkc.lt  
www.lkc.lt

